

*Inland Empire Breastfeeding Coalition presents:*

## *Quarterly Hospital Collaborative Meeting*

**February 27th 2024**

**2:15-3:15 PM following General Ed Session**

### **What to Expect When Your Hospital is Expecting Baby Friendly**

Facilitated by  
**Pat Spier BSN, RNC-OB, EFM-C and  
LeeAnn Contreras BSN, RN, IBCLC**



#### **Discussion Topics:**

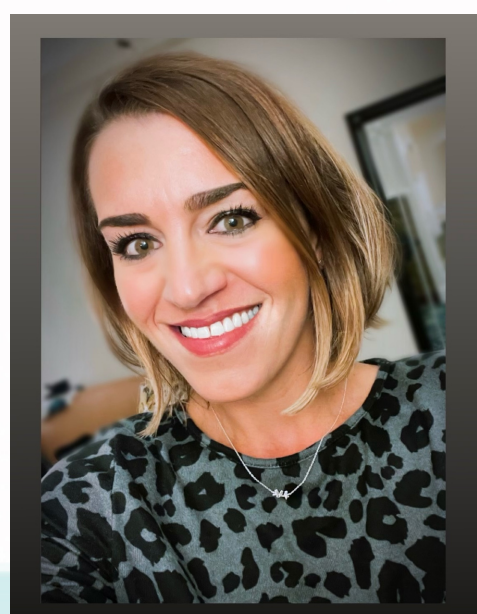
1. Virtual versus in person Assessments.
2. What to expect during your assessment and how to prepare.
3. Data collection and chart audits.
4. What does your staff need to know?
5. What do the families need to know?
6. What happens if you don't "pass"?
7. How does Model Hospital Policy compare?

#### **2024 Hospital Collaborative Dates:**

April 23rd 2024

July 23rd 2024

October 22nd 2024



The IE Baby Friendly Hospital-Community Network is a collaboration of IE hospitals and community partners such as WIC and Black Infant Health, who come together to support the progress towards, the maintaining of, and the consistency of, breastfeeding friendly policies and practices across our counties, as we support the health of our Inland families through healthy first foods. We are currently networking and sharing our journeys of being Baby Friendly and deciding the future in regards to SB402.

Follow Us:  
@iebfcoalition



Visit our website <https://www.iebreastfeeding.org> or use the QR code for more information.